

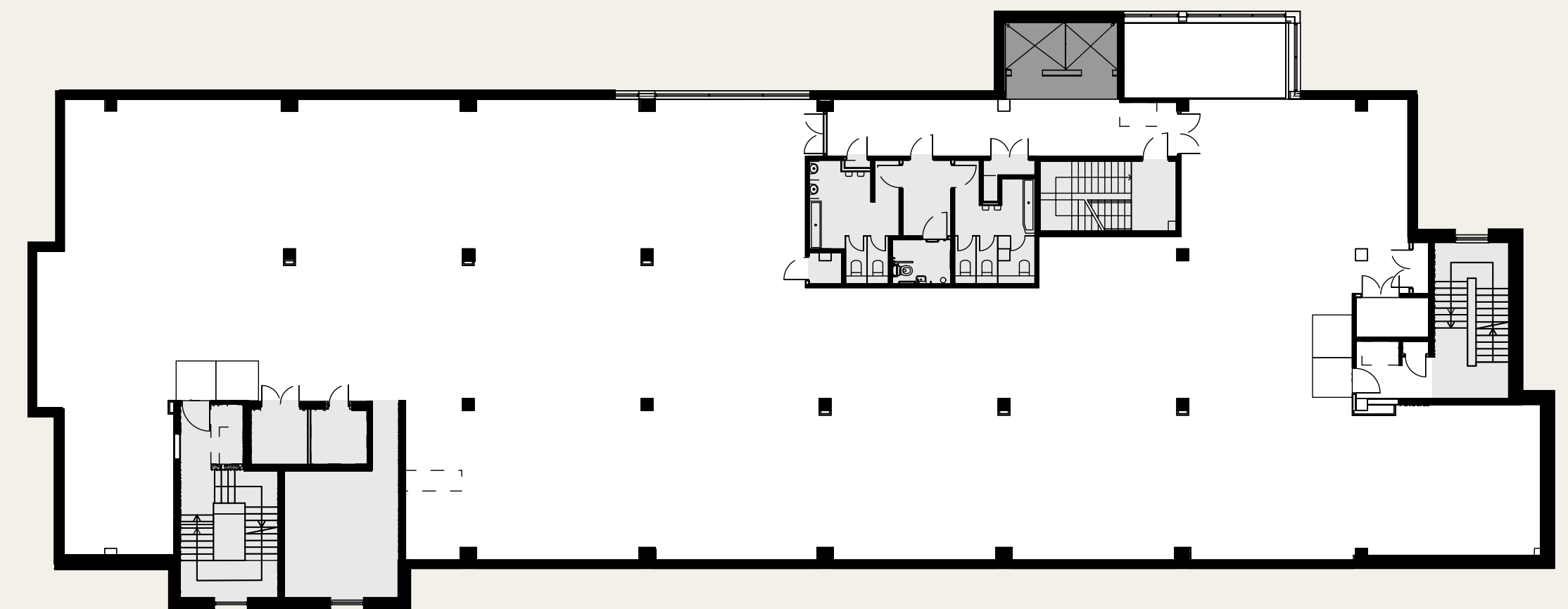
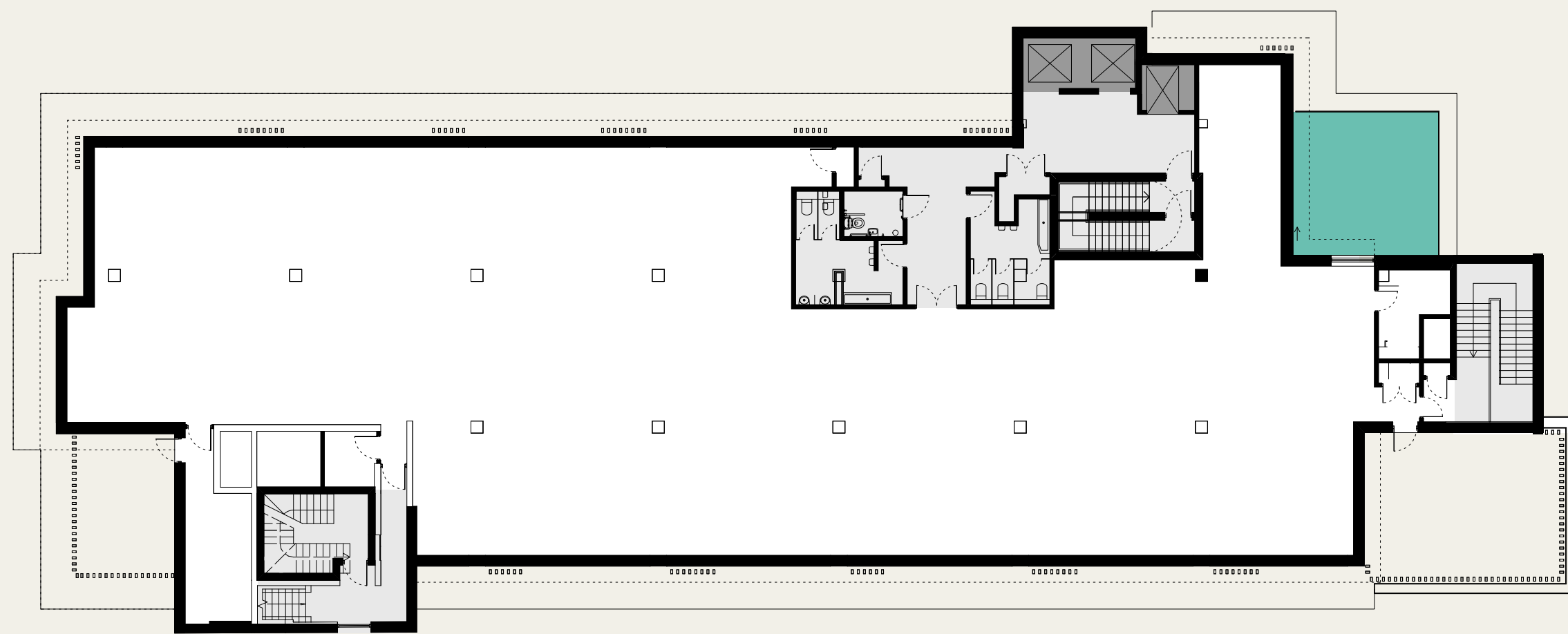


FLOOR PLANS



FOURTH 6,512 SQ FT 605 SQ M

THIRD 8,514 SQ FT 791 SQ M



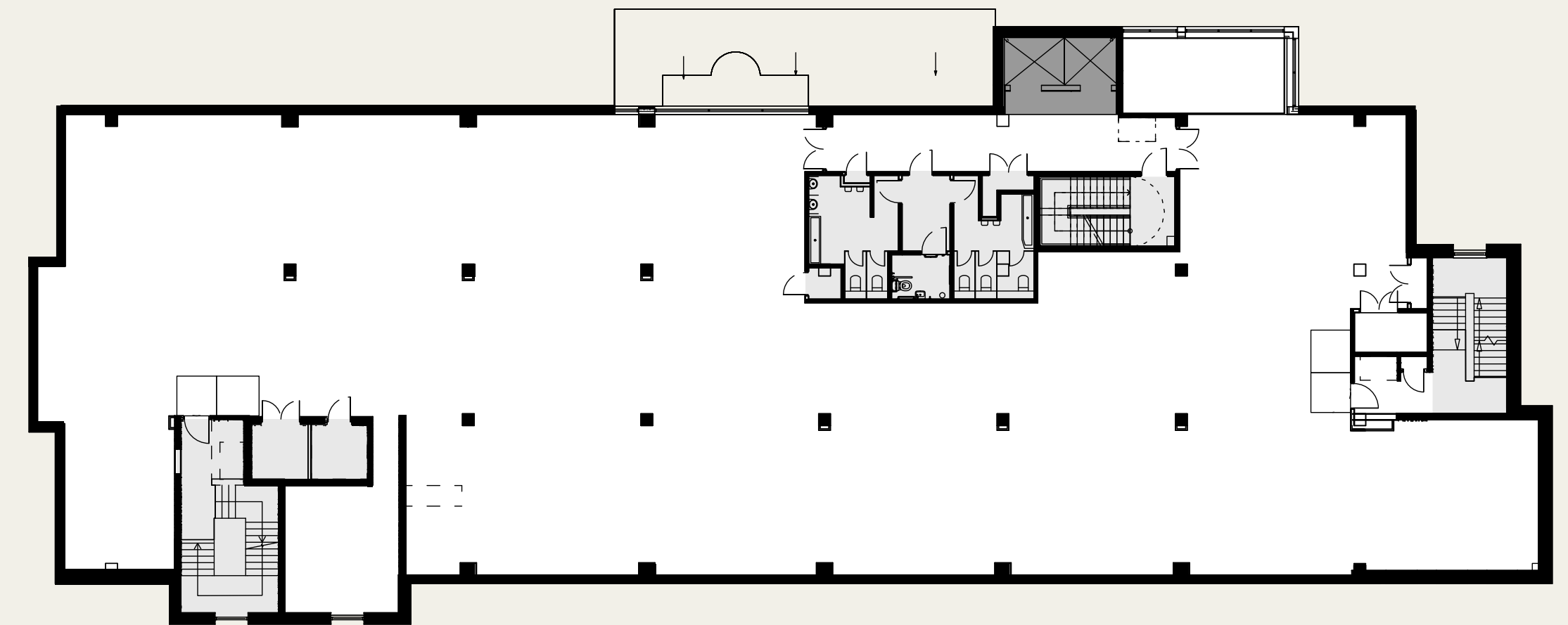
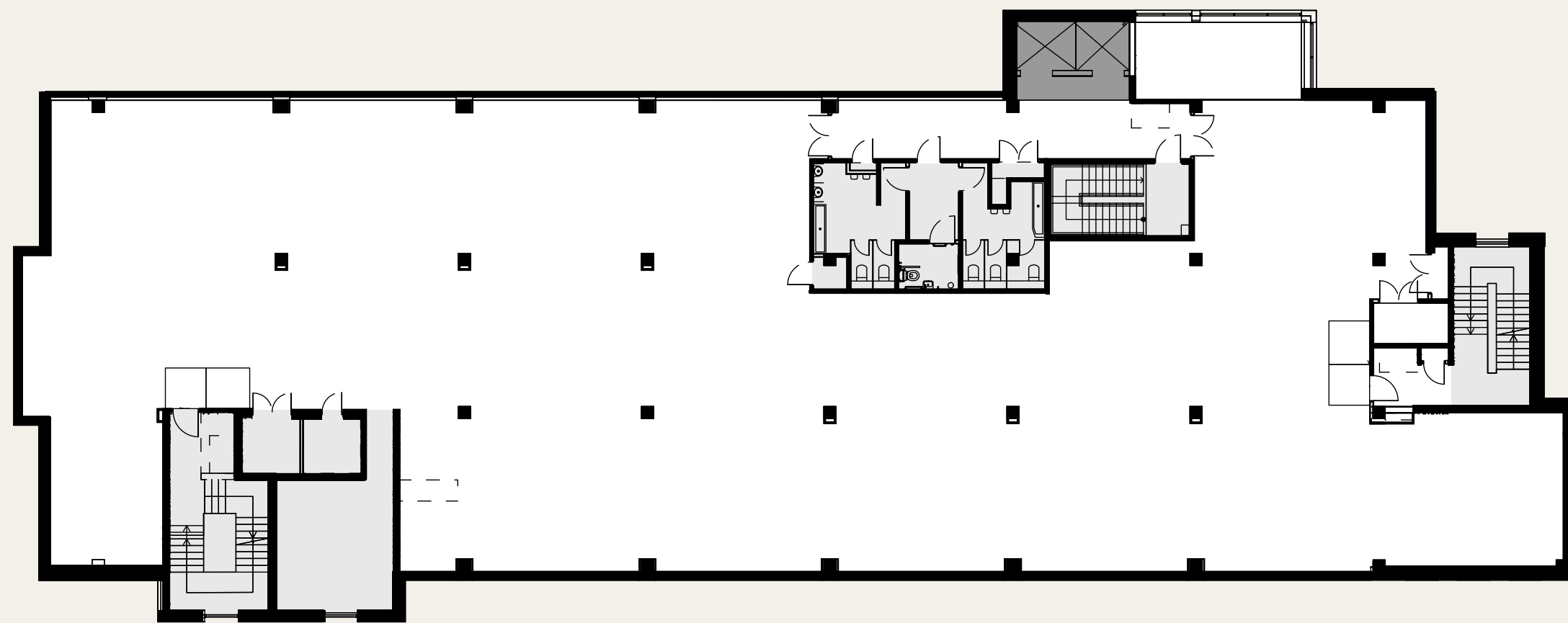
- Core
- Lifts
- Office
- Terrace - 301 sq ft

Not to scale. For indicative purposes only.



SECOND 8,514 SQ FT 791 SQ M

FIRST 8,514 SQ FT 791 SQ M

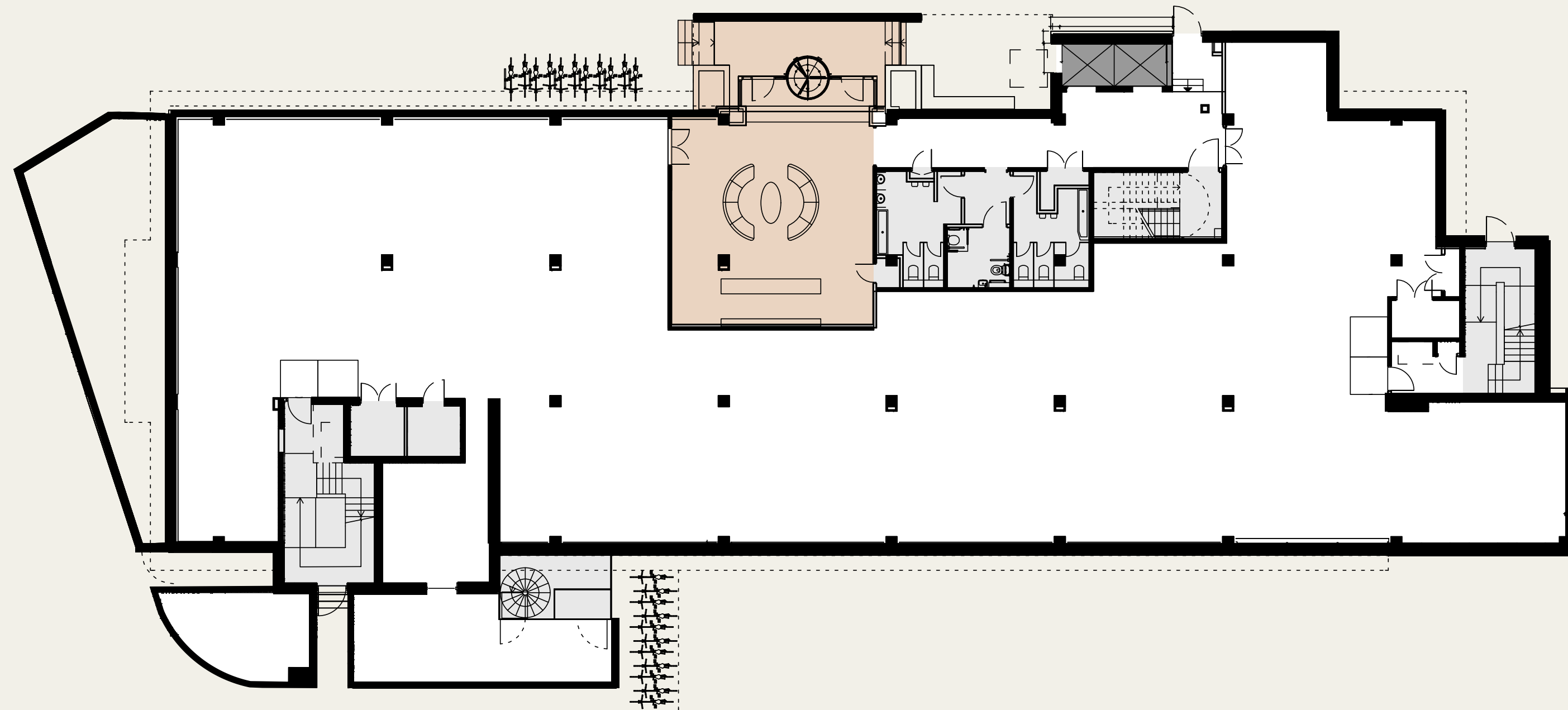


- Core
- Lifts
- Office

Not to scale. For indicative purposes only.



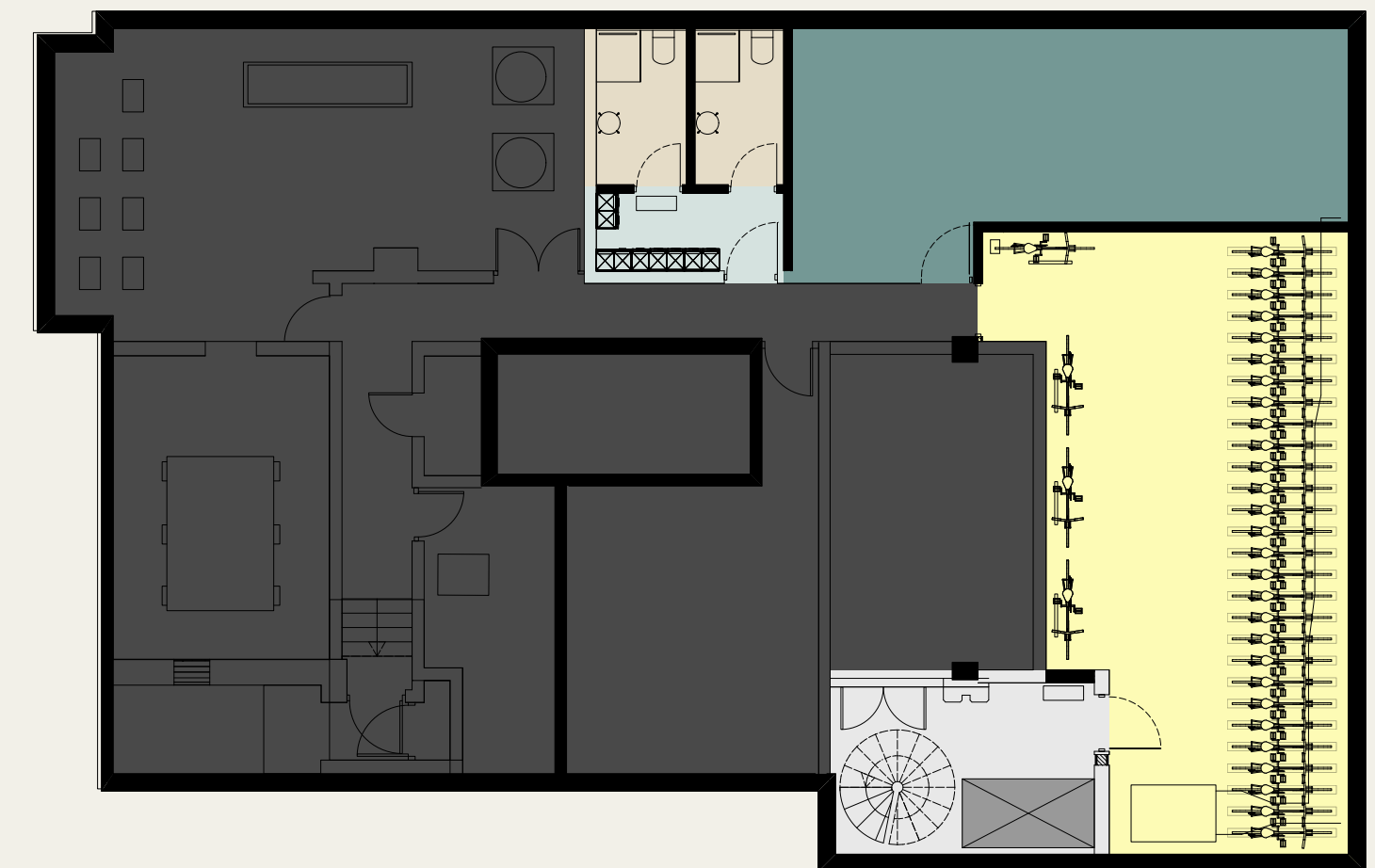
GROUND 7,534 SQ FT 700 SQ M



- Core
- Lifts
- Office
- Entrance

- Core
- Changing room
- Showers
- Gym
- Bike Store
- Plant

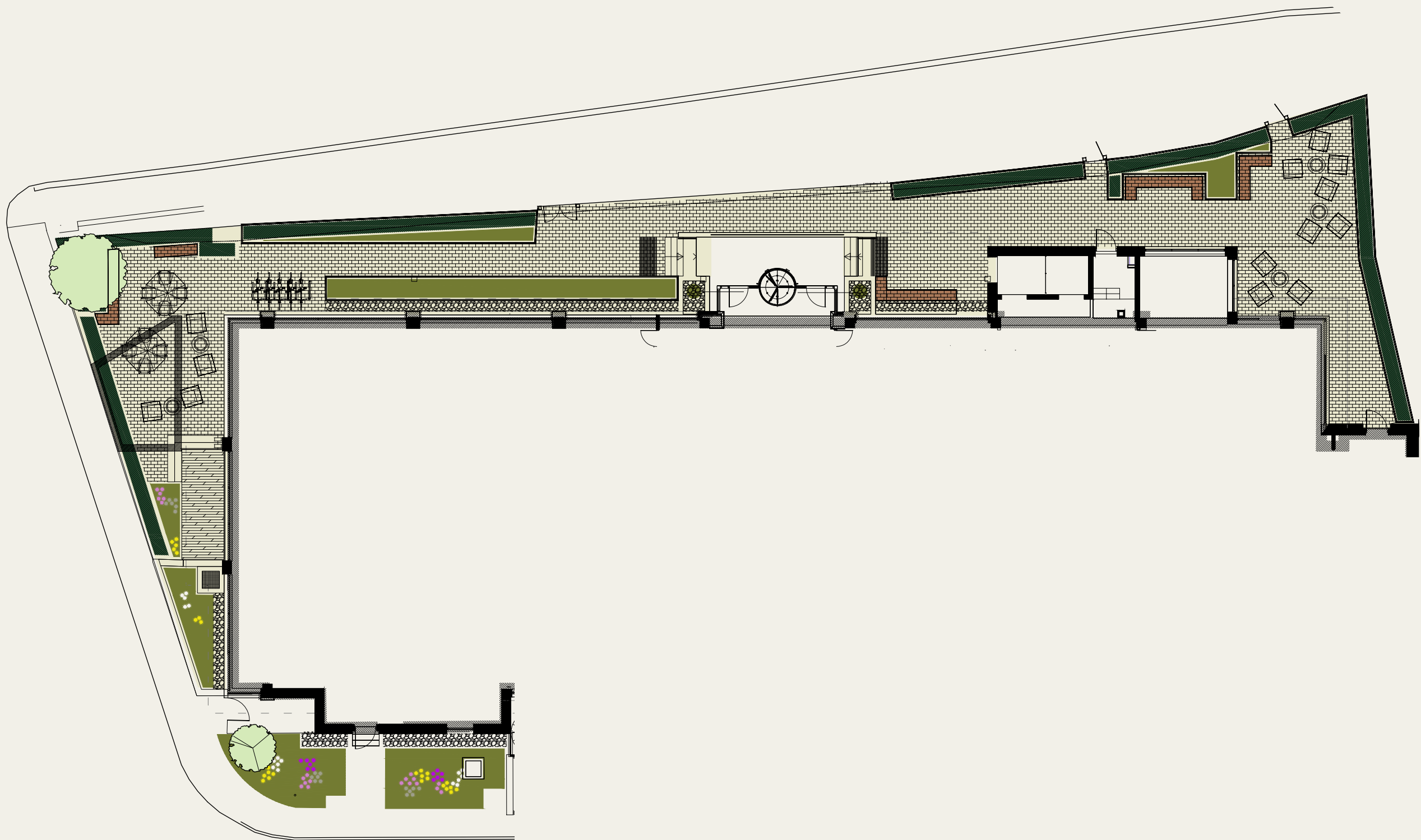
BASEMENT



Not to scale. For indicative purposes only.



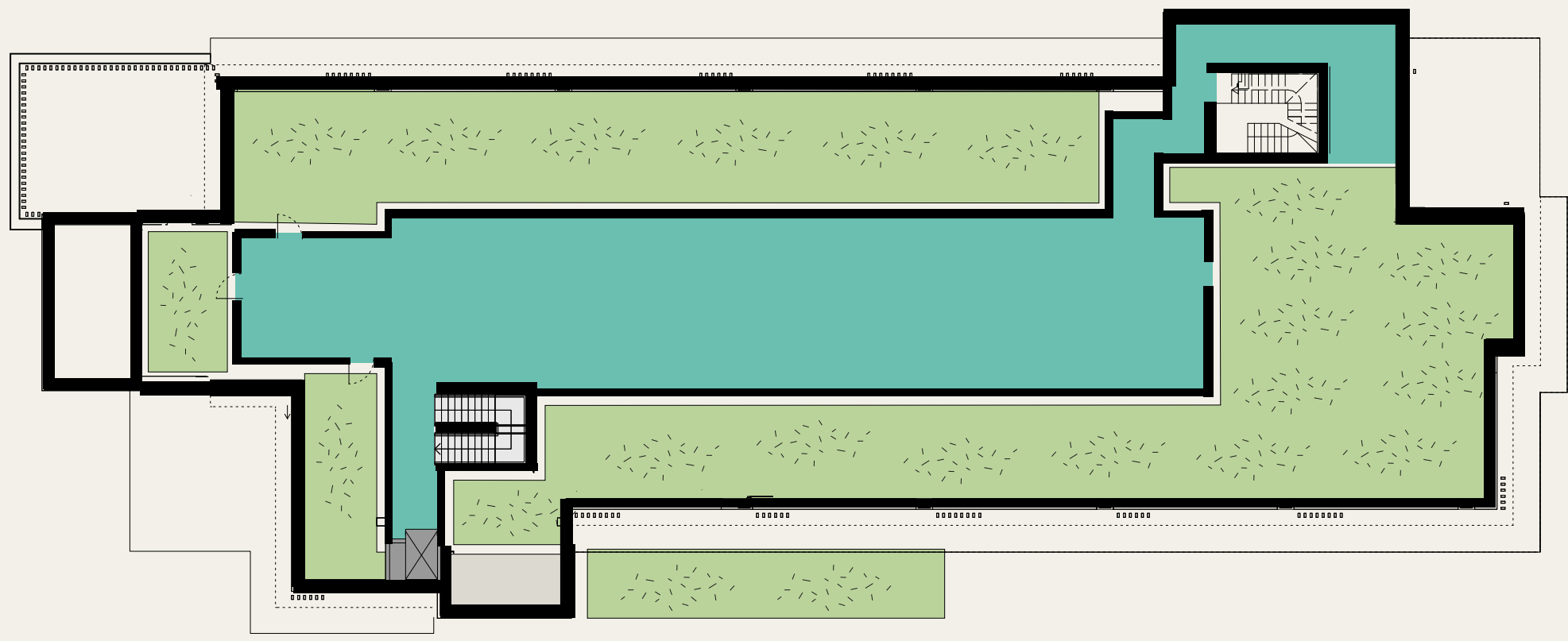
GROUND - LANDSCAPING PLAN



- Paving
- Bench seating
- Hedge planting

Not to scale. For indicative purposes only.

ROOF- TERRACE 2,300 SQ FT



- Core
- Lift
- Terrace
- Green roof